

## ALL-DAY GOODIES

### SNACK BOXES

**TRAVEL TREATS\*** \$5.50  
 Old Wisconsin Beef Salami Slices  
 Pepperidge Farm Cheese Crisps  
 Rondelé Original Cheese Spread  
 Partners Roasted Garlic and Parmesan Crackers  
 Traverse Bay Fruit Company Fruit Medley  
 Toblerone Chocolate



**FLIGHT DELIGHTS\*** \$6.00  
 Dr. Kracker™ Snackers  
 The Gracious Gourmet® Mediterranean Vegetable Spread  
 Mario® Snack Olives  
 Sweet Perry Orchards™ Summer Berry Blend  
 Sweet Perry Orchards™ Tuscan Almonds  
 Brown & Haley® ALMOND ROCA® Buttercrunch Toffee



**BENTLEY'S POPCORN** \$2.00  
 Toffee Caramel

**WRIGLEY'S 5 "RAIN" GUM** \$2.00  
 Spearmint

**M&M'S** \$2.00  
 Milk Chocolate

**PRINGLES** \$3.00  
 Sour Cream & Onion

\*Product contents may vary.

## BEVERAGES

### FEATURED COCKTAILS

**SKY QUENCH** \$7.00  
 Skyy Vodka, Fresca, Served Over Ice



**JD HONEY & GINGER** \$7.00  
 Jack Daniels Tennessee Honey Whiskey  
 Canada Dry Ginger Ale, Served Over Ice

**SPIRITS** \$7.00

Bacardi Rum  
 Bailey's Irish Cream Cordial  
 Canadian Club Reserve Whisky  
 Dewar's Scotch  
 Glenlivet Single Malt Scotch Whisky  
 Jack Daniel's Tennessee Whiskey  
 Jack Daniels Tennessee Honey Whiskey  
 Skyy Vodka  
 Tanqueray Gin  
 Woodford Reserve Small Batch Bourbon

**BEERS** \$5.00  
 Corona Extra • Heineken • Miller Lite

**WINES FROM WENTE VINEYARDS** \$7.00  
 Ask your Flight Attendant for today's selections

*According to the U.S. Surgeon General, women who are pregnant or who may become pregnant are advised to not drink any alcohol.*

**Delta Air Lines only accepts credit and debit cards for all on-board purchases. Debit/credit cards or cash are accepted on Intra-Asia routes. Delta Connection flights with single class service accept cash only. ATM and gift cards are not accepted. Debit cards are only accepted if they bear a major credit card logo.**

Use your Delta SkyMiles® Credit Card from American Express and earn double miles for onboard food, beverage and entertainment purchases.

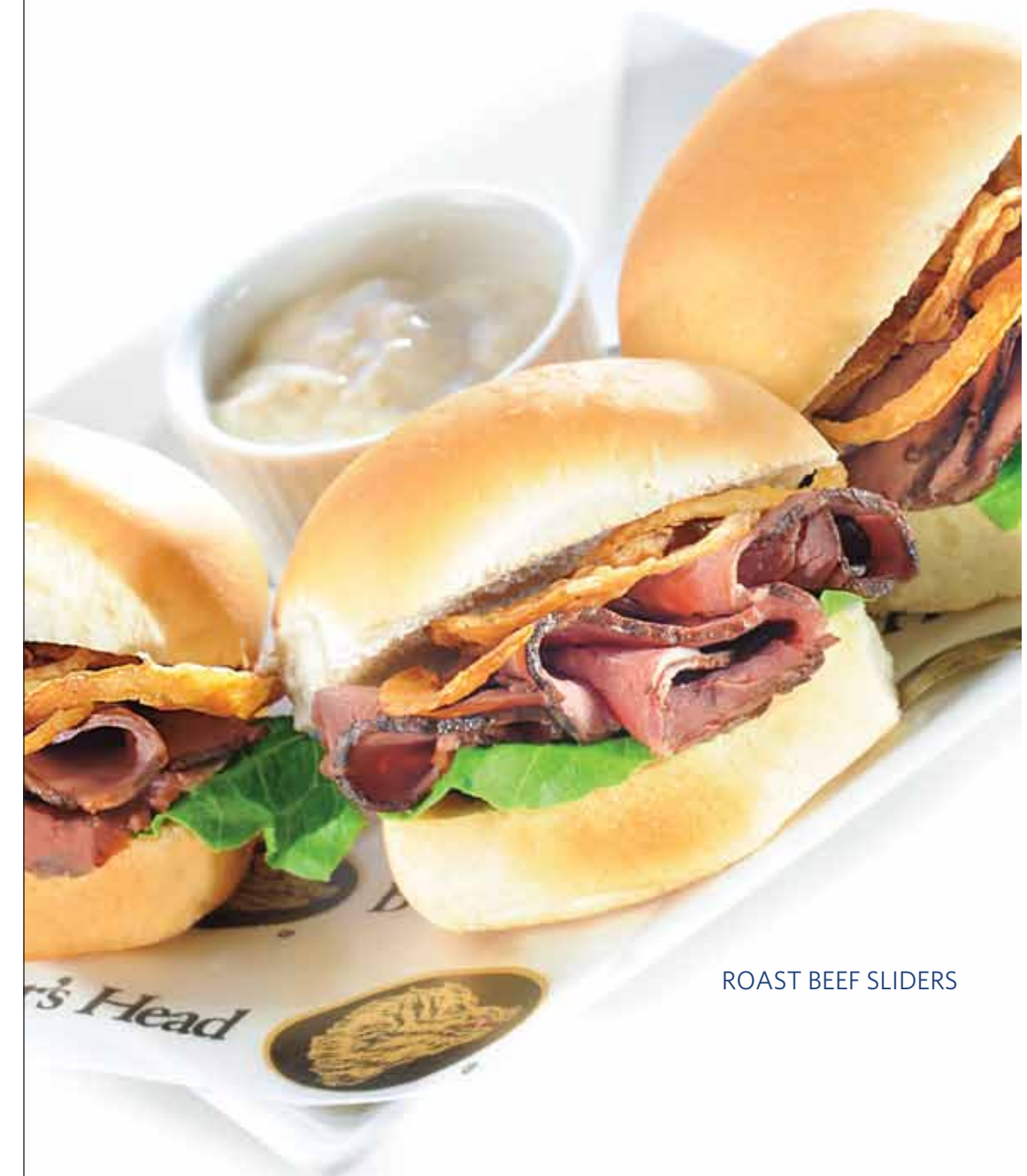
Alcohol may be served to customers over the age of 21 only.  
 By FAA rule, we may not serve alcohol to customers who appear intoxicated.  
 Only alcohol provided by Delta may be consumed onboard.  
 All SkyMiles program rules apply to mile offer. To review the rules, please visit  
 delta.com/memberguide. ©2011 Delta Air Lines, Inc.

Printed on recycled paper  
 Printed using soy based inks

08/11



# EATS



ROAST BEEF SLIDERS

## BREAKFAST

5:00am - 9:45am  
BASED ON LOCAL DEPARTURE TIMES

### YOGURT PARFAIT

Start your day off right with this healthy customer favorite. We start with premium vanilla yogurt and layer with fresh blackberries and peaches.



\$3.50

### FRUIT & CHEESE PLATE

An appetizing assortment of Blue, Cheddar, and Edam cheeses accompanied by Granny Smith and Braeburn apple slices, red grapes, a strawberry, and crackers.

\$6.75

### TURKEY BACON & EGG SALAD CROISSANT

Looking for something hearty to start your day? We fill a large fresh butter croissant with egg salad and top it off with cheddar slices and turkey bacon.

\$6.50



## LUNCH/DINNER

9:46am - 8:00pm  
BASED ON LOCAL DEPARTURE TIMES

### WESTBOUND FLIGHTS

#### FRUIT & CHEESE PLATE

An appetizing assortment of Blue, Cheddar, and Edam cheeses accompanied by Granny Smith and Braeburn apple slices, red grapes, a strawberry, and crackers.



\$6.75

#### DELI-SLICED ROAST CHICKEN SANDWICH

This deli-inspired creation starts with slices of Boar's Head EverRoast Chicken topped with sliced Asiago cheese, roasted red peppers, fresh arugula, and herb aioli, piled on a fresh rosemary focaccia roll.



\$8.50

#### KIDS PB&J PLATE

Created specially for our young travelers and those young at heart! This summer special includes a half of a peanut butter and jelly sandwich on whole grain bread and is served with grapes, apple slices, carrot and celery sticks and a side of ranch dressing.



\$4.50

#### New LUNCH/DINNER MENU ITEM!

#### BEN & JERRY'S ICE CREAM

Available on select eastbound and westbound flights within the United States

Beat the heat this summer with a refreshing cup of Ben & Jerry's All Natural Homemade Ice Cream. Available in two delicious flavors:

#### CHERRY GARCIA

Cherry Ice Cream with Cherries & Fudge Flakes.

#### VANILLA

Smooth Ice Cream consciously concocted with a particularly flavorful vanilla blend.

\$2.50

### EASTBOUND FLIGHTS

#### FRUIT & CHEESE PLATE

An appetizing assortment of Blue, Cheddar, and Edam cheeses accompanied by Granny Smith and Braeburn apple slices, red grapes, a strawberry, and crackers.

\$6.75

#### ROAST BEEF SLIDERS

We fill mini rolls with savory slices of Boar's Head Roast Beef and top them off with fried onion straws and fresh lettuce, accompanied by a side of horseradish sauce.

\$8.50



#### KIDS PB&J PLATE

Created specially for our young travelers and those young at heart! This summer special includes a half of a peanut butter and jelly sandwich on whole grain bread and is served with grapes, apple slices, carrot and celery sticks and a side of ranch dressing.

\$4.50

#### FRESH SELECTIONS - CARIBBEAN AND LATIN AMERICA

#### FRUIT & CHEESE

BREAKFAST & LUNCH/DINNER

\$6.75

#### TURKEY BACON & EGG SALAD CROISSANT

BREAKFAST

\$6.50

#### DELI-SLICED ROAST CHICKEN SANDWICH\*

\$8.50

-OR-

#### ROAST BEEF SLIDERS\*

LUNCH/DINNER

\$8.50

\*Ask your flight attendant for today's sandwich selection